

Aladdin

The Rock'n'Roll
Panto

Visual Story

Index

Information about the show	pg. 2
Information about the auditorium	pg. 3
Things to look out for	pg. 4
Characters in the show	pg. 7
The story	pg. 10

This guide has been created to help you prepare for your visit to see the relaxed performance of **Aladdin: The Rock 'n' Roll Panto** with information about what to expect. If you have any more questions, please contact info@leedsheritagetheatres.com.

We hope you enjoy the show!

Information about the show

Running time: Performances may last up to 2hrs 30mins
(including a 20-minute interval)

Age Guidance: We do not recommend our pantomime for under 4s, but if you do want to bring younger children, we recommend ear defenders, and you will be required to purchase a ticket for any child aged 1+

Content Guidance: Our Rock 'n' Roll Panto contains loud music, smoke effects, pyrotechnics and water pistols

Changes for the relaxed performance:

- An open door policy throughout the show so that you can come and go
- Freedom to move to alternative seating if required
- Our Circle bar area will be used as a chill-out space for anyone who wishes to take time out from the performance
- A relaxed attitude to noise (voluntary and involuntary)
- The lights in the auditorium will be on at a low level
- Certain light and sound effects may be reduced, or not used
- The sound levels from the stage will be reduced
- Our cast will not enter the auditorium seating area at any time
- At the start of the performance the characters and cast members will be introduced

Information about the auditorium

The auditorium is the part of the theatre where the audience sits to watch the show.



The stage is the area where the actors perform the show.

The set is the name for the scenery, furniture and objects used on stage during a show.



Things to look out for

Below, we have listed some moments throughout the show where the action gets loud or otherwise overwhelming, which may be helpful to know about. The timings provided are approximate. Pantomimes involve improvisation and audience interaction, so things may not always happen at exactly the planned time.

ACT ONE

- **10 min:** At the end of I'm a Believer, Tommy the Tyke is fake-punched and falls to the ground with a thud.
- **12 min:** Dame Widow T enters, with big music and applause. Audience participation is then encouraged as she introduces herself to the audience.
- **13 min:** An audience member near the front row is chosen by the Dame and encouraged to introduce themselves to the crowd.
- **19 min:** The same audience member is suddenly picked on again and referenced on stage.
- **20 min:** Birthday shoutouts and requests are read out by the Dame, involving audience participation.
- **21 min:** Abanazer, the villain, is introduced, accompanied by smoke effects, dramatic music cue, and boos from the audience.
- **22 min:** As part of a recurring gag, there is a sudden burst of red lighting and 'dun dun dun' sound effects as the villain announces himself.
- **23 min:** Thunder and lightning sound and visual effects on stage (bright flashes through the window).
- **25 min:** Some flashing spotlights during Lady Gaga's Bad Romance.

- **30 min:** Thunder and lightning sound and visual effects on stage (bright flashes through the window).
- **31 min:** A piercing baby scream sound effect comes out of Tommy unexpectedly.
- **32 min:** The Dame hits Tommy with a large, oversized rolling pin.
- **51 min:** As Muddles the Monkey is introduced, audience participation is encouraged to call their name as loud as possible.
- **52 min:** Muddles the Monkey enters the stage alongside the side stalls.
- **59 min:** There is a burst of smoke as a prop book is brought on by a stagehand
- **60 min:** A trap door on stage opens, with fiery light, smoke and a thundering rumble.
- **61 min:** Trap door is slammed shut with a burst of light, trapping Aladdin and Muddles.
- **63 min:** The Genie is introduced on stage with smoke effects.
- **69 min:** Sparks fly from off-stage as a lit-up 'Al's Place' sign slowly comes down from above the stage.

Act One is 69 minutes long

ACT TWO

- **5 min:** Audience participation.
- **15 min:** Abanazer is hit in the face with a custard pie, followed by an angry response and boos from the audience.
- **16 min:** during the Dame's solo (I Will Survive), smoke effects cause her to cough.
- **20 min:** A comically large inflatable banana is thrown out from above the stage.
- **25 min:** Tommy hits himself in the face with a baseball bat.

- **33 min:** Electricity surge sound effects and lampposts on either side of the stage light up.
- **44 min:** The Genie casts a spell, and the cast leaves the stage to menacing music. Scene backdrop changes as smoke fills the stage. Flashing lights shine on the audience.
- **51 min:** Abanazer does a small flourish, producing a flame from his hand during the curtain call.
- **52-53 min:** Confetti falls on the stage and purple spotlights move up and down, shining on the audience.

Act Two is 54 minutes long

Characters in the show

There are eight male and three female actors in Aladdin. All the actors sing, dance and play musical instruments. Some of the actors play several roles – you will be able to tell when they change character because they will change their costumes and accents.

Harry F Brown plays Aladdin



Laura Andresen Guimarães plays Princess Peachblossom



Simon Nock plays Dame Tallulah Tightbottom



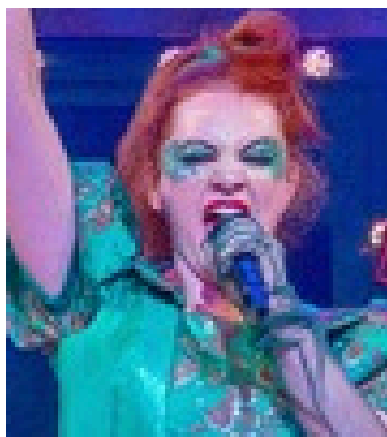
Kenny Davies plays Abanazer



Guy Freeman plays Tommy the Tyke



Lucy Wells plays Genie



Dan Carter-Hope plays The Emperor



Maddie Hansen plays Muddles



Max Bower plays Hans the Dishwasher



Damien James plays The Storyteller/Hans the Potwasher



Tom Benjamin plays Gervase



[Find out more
about our cast by
clicking here!](#)

The story

SPOILER ALERT!

Below is a summary of the story which means we tell you what will happen. This might be helpful to know before you come to the theatre but if you want the story to be a surprise, we suggest that you do not read these pages. Please don't share these with other people as they might want the surprise. There are things about the show that have been changed from the original story to make it suitable for our pantomime.

ACT ONE

Welcome to Kirkgate Market, the beating heart of Leeds – bright lights, busy stalls, and the sound of a live band filling the air. The story bursts into life with Mark Ronson and Bruno Mars' Uptown Funk, setting the scene for an adventure packed with fun, friendship, and a little bit of magic.

We meet Aladdin – or Alvin (you'll find out!) – a cheerful dreamer with a big imagination and not much else. He works for his larger-than-life mother, Widow Tallulah Tightbottom (Widow T), who runs the Wash and Nosh Emporium, a café and combined laundry that's as full of laughter as it is of bubbles.





Across the market, Princess Peachblossom has sneaked away from her father's grand house at Harewood to explore life beyond the palace gates. When she bumps into Aladdin, it's love at first sight, told through Pulp's Common People. Their worlds couldn't be more different, but they just can't help falling for each other.

Watching from the shadows is the dastardly Abanazer, a sorcerer who's been searching for a magic lamp buried somewhere beneath Leeds. He needs someone brave enough – or daft enough – to fetch it for him.

Back at the Wash and Nosh, Widow T introduces herself with Lady Gaga's Bad Romance, Tommy the Tyke dashes through deliveries to Huey Lewis's Workin' for a Living, and Aladdin sneaks into Harewood House to find the Princess. Inside, she argues with her father, the Emperor, in Madonna's Papa Don't Preach, while Tommy sings The Turtles' Happy Together and Widow T offers heartfelt advice in Whitney Houston's How Will I Know.

But when Aladdin tries to impress the Princess by pretending to be a prince – helped by his playful monkey friend Muddles, who joins in with The Specials' Monkey Man – things go terribly wrong, and the Emperor sends them all packing.

Tricked by Abanazer, Aladdin is sent deep underground to find the lost lamp. When he's betrayed and left trapped in the dark, he rubs the lamp in frustration... and from a burst of light appears the incredible Genie of the Lamp, singing Billy Swan's I Can Help.

With one final song – Get Ready by The Temptations – the Genie transforms Aladdin into a prince. As the curtain falls, our Leeds lad's luck has changed, but his biggest adventure is still to come!

ACT TWO



When the curtain rises again, everything has changed. Aladdin is no longer a poor lad from the market; he's the proud owner of Al's Place, the most dazzling nightclub Leeds has ever seen. His house band launches into Land of 1000 Dances by Wilson Pickett, and the party is in full swing. Aladdin's dreams have come true – he's rich, admired, and soon to be married to Princess Peachblossom.

But miles away, trouble is brewing. The wicked Abanazer has survived his fall and returns, plotting revenge. Fired up and furious, he roars into Born to Be Wild by Steppenwolf, vowing to reclaim the lamp and use its power for himself.

Back in the market, Widow Tallulah Tightbottom refuses to let recent disasters dampen her spirits. She's rediscovered her sparkle and a hint of magic, singing Abracadabra by Steve Miller Band before bouncing back with I Will Survive by Gloria Gaynor.

Meanwhile, the Genie is enjoying her freedom and showing off her powers with Queen's It's a Kind of Magic. But her celebration is cut short when Abanazer sneaks in, steals the lamp, and forces her back under his control.

Defeated and alone, Aladdin finds himself back where he started. Meanwhile, Tommy the Tyke shares a heartfelt moment with the Princess through Smokey Robinson & The Miracles' Tracks of My Tears. With help from Widow T and Muddles, they hatch a plan to defeat Abanazer and free the Genie once and for all.

At the crucial moment, the Genie breaks free from Abanazer's grip in a triumphant burst of Beyoncé's Freedom, turning his wicked spells back on him. The villain is defeated, Leeds is saved, and the streets light up once more.

With peace restored, the Emperor finally gives his blessing for Aladdin to marry Princess Peachblossom, who never stopped believing in him. The Genie leads the company and the audience in a celebration with Bill Withers' Lean on Me, followed by a wedding full of smiles, dancing, and confetti.

The finale brings everyone together – heroes, friends, and the people of Leeds – in a big, feel-good medley of Natalie Cole's This Will Be (An Everlasting Love) and Martha & The Vandellas' Dancing in the Street. By the time the last chorus rings out, it's one giant City Varieties celebration – a story of courage, friendship, and believing in magic, no matter where you're from.

